



Sailing Instructions
NSSC Doublehanded Championship Regatta
Saturday, September 22, and Sunday, September 23, 2018

1. **Rules & Management:** This regatta shall be under the management of North Star Sail Club and shall be managed by the rules as defined in *The Racing Rules of Sailing* (RRS) and as modified by the 2018 Anchor Bay Yacht Racing Association (ABYRA), this regatta's Notice of Race, and these Sailing Instructions.
2. **Notices to Competitors:** Notices to competitors will be posted on the official notice board on Yachtscoring.com.
3. **Changes in Sailing Instructions:** Changes to sailing instructions will be posted on the official notice board by 0800 on Saturday, September 22. Per RRS 90.2(c), when RC flies Code "L" flag, ("come within hail"), verbal changes may be given altering any part of these instructions.
4. **Required Equipment:** Every entrant is required to carry all U.S. Coast Guard required equipment.
5. **Personal Flotation Devices:** Skipper and crew **must** wear a USCG approved life vest with whistle attached from the time a yacht starts the race until the yacht finishes or retires.
6. **Assumption of Risk:** Competitors participate in the regatta entirely at their own risk. See RRS 4, Decision to Race. The organizing authority will not accept any liability for material damage or personal injury or death sustained in conjunction with or prior to, during, or after the regatta.
7. **Classes:**
 - a. **SPIN:** Spinnakers allowed.
 - b. **JAM:** No symmetrical or asymmetrical spinnakers, oversize whisker poles, staysails, or double head rigs may be used except as provided by the class rules.
8. **Class Flags, Splits and Notices:** Splits will be posted on the official notice board by 0800 on the morning of the 1st race and can also be obtained from the RC boat.
9. **Sail Numbers:** Time will not be taken if yacht mainsail, overlapping jib and spinnaker do not bear the proper number or bear the same number as another yacht in its class, unless the Race Committee is notified prior to the start of the race.
10. **Scoring:** Low point in each class. All races will be included in series scoring.
11. **Awards:** Results and awards will be presented at North Star Sail Club after dinner, on Sunday, at approximately 1730. Flags will be awarded for the first three finishers in each class. Results will be posted on **YachtScoring.com** within a few days.
12. **Radio Monitoring:** All yachts are required to monitor VHF channel 69 during the race.
13. **Abandonment of Racing:** Yachts dropping out shall report as soon as possible to the race committee on channel 69. It is the responsibility of each individual skipper to assess known conditions, boat and crew in the determination to abandon or continue race.
14. **Shipping Channel:** No boat shall in any way hinder commercial shipping during this event. Any yacht hindering commercial shipping will be disqualified. If commercial shipping is forced to issue a warning signal (5 or more short blasts) that is evidence that you have hindered commercial shipping and should abandon the race.
15. **Time Limit:**
 - a. **Saturday:** six hours for each class.



Sailing Instructions
NSSC Doublehanded Championship Regatta
Saturday, September 22, and Sunday, September 23, 2018




- b. **Sunday:** three hours for each class.
 - c. One yacht finishing within the time limit constitutes a race for its class and extends the time limit for its class.
16. **Start/Finish Line:**
- a. **Saturday:** Between government buoy 1PH and an orange flag on the committee boat.
 - b. **Sunday:** Between government buoy CR and an orange flag on the committee boat.
17. **Protection Mark:** One or more limit marks may be set near the start-finish line RC boat. If a yacht touches any limit mark, the starting-finish line RC boat, or passes between them, she shall have touched a mark. As per Rule 44.1, she shall exonerate herself by sailing well clear of all other yachts as soon as possible and remain clear doing a 360° turn, including one tack and one jibe.
18. **Restricted Area:** All yachts must keep clear of the starting line area and the first leg of the course until after the warning signal for their class.
19. **Postponement or Cancellation:** Signals will be displayed from Committee Boat and accompanied by two guns or sound signals as follows:
- a. **“AP” Code Answering Pennant** (vertical red and white stripes, 2 sound signals): All races not started are postponed. This signal will be lowered one minute before next signal is made, which may be code flag “N” or warning signal, is made.
 - b. **“N” Code flag** (checkered blue and white, 3 sound signals): All races, including those in progress are abandoned, return to starting area.
 - c. **“N” over “H” Code flag** (vertical half red and white): All races are abandoned, Further signals ashore.
 - d. **“N” over “A” Code flag** (vertical half blue and white): All races are abandoned. No more racing today.
 - e. **RECALL:** As per rule 29.1, visual recall signal is a white flag with blue cross (code flag “X”), accompanied by a sound signal. Sail number(s) may be broadcast on VHF channel 69.
20. **Starting Sequence:** RRS 26 is unchanged.
21. **First Signal:**
- a. Saturday: 0955 hours
 - b. Sunday: 0955 hours (the second race will start soon after the last finish of the first race)



Sailing Instructions
 NSSC Doublehanded Championship Regatta
 Saturday, September 22, and Sunday, September 23, 2018

22. Race Course (see diagrams that follow, all compass headings are magnetic):

a. **Saturday** – three possible courses:

Course (length):	#1 (15.7 nm)	#2 (15.7 nm)	#3 (10.6 nm)
Shape:			
Leave Marks To:	Port	Starboard	Port
Leg 1:	226° to M	183° to SC Light	183° to SC Light
Leg 2:	130° to SC Light	310° to M	003° to 1PH
Leg 3:	003° to 1PH	046° to 1PH	n/a
Leg 4:	002° to CR	002° to CR	n/a

Approximate Mark Locations:

1PH	42° 33.20' N	82° 44.86' W
M	42° 30.22' N	82° 48.99' W
SC Light	42° 27.89' N	82° 45.21' W

b. **Sunday** – three possible courses:

Course (length):	Red (5.2 nm)	Green (5.2 nm)	C (6.1nm)
Shape:	Red	Green	White w/ Black "C"
Leave Marks To:	Port	Starboard	Port
Leg 1:	023° to B	322° to A	352° to C
Leg 2:	263° to A	083° to B	172° to Finish
Leg 3:	142° to Finish	203° to Finish	n/a

Approximate Mark Locations:

CR	42° 35.65' N	82° 44.73' W
A	42° 37.02' N	82° 46.19' W
B	42° 37.24' N	82° 43.83' W
C	42° 38.64' N	82° 45.31' W



Sailing Instructions
NSSC Doublehanded Championship Regatta
Saturday, September 22, and Sunday, September 23, 2018

23. **Shortened Course:** The course may be shortened at any turning mark. Finish between RC boat bearing code flag "S", (white flag with blue square) and nearby mark.
24. **Alternate Penalty:** The TwoTurns or OneTurn Penalty as described in RRS 44.1, 44.2 shall apply.
25. **Protests:** A yacht that wishes to protest another yacht shall:
 - a. Comply with provisions of RRS 61.1
 - b. Inform the protested yacht at the first reasonable opportunity and after finishing, promptly inform the Race Committee on station at the finish.
 - c. Submit written protest to the Race Committee within 90 minutes after the last race of day. All protests will be heard by the DRYA Protest Committee at Bayview Yacht Club the Monday following the race at 1900. Check the DRYA website (drya.org) for instructions.



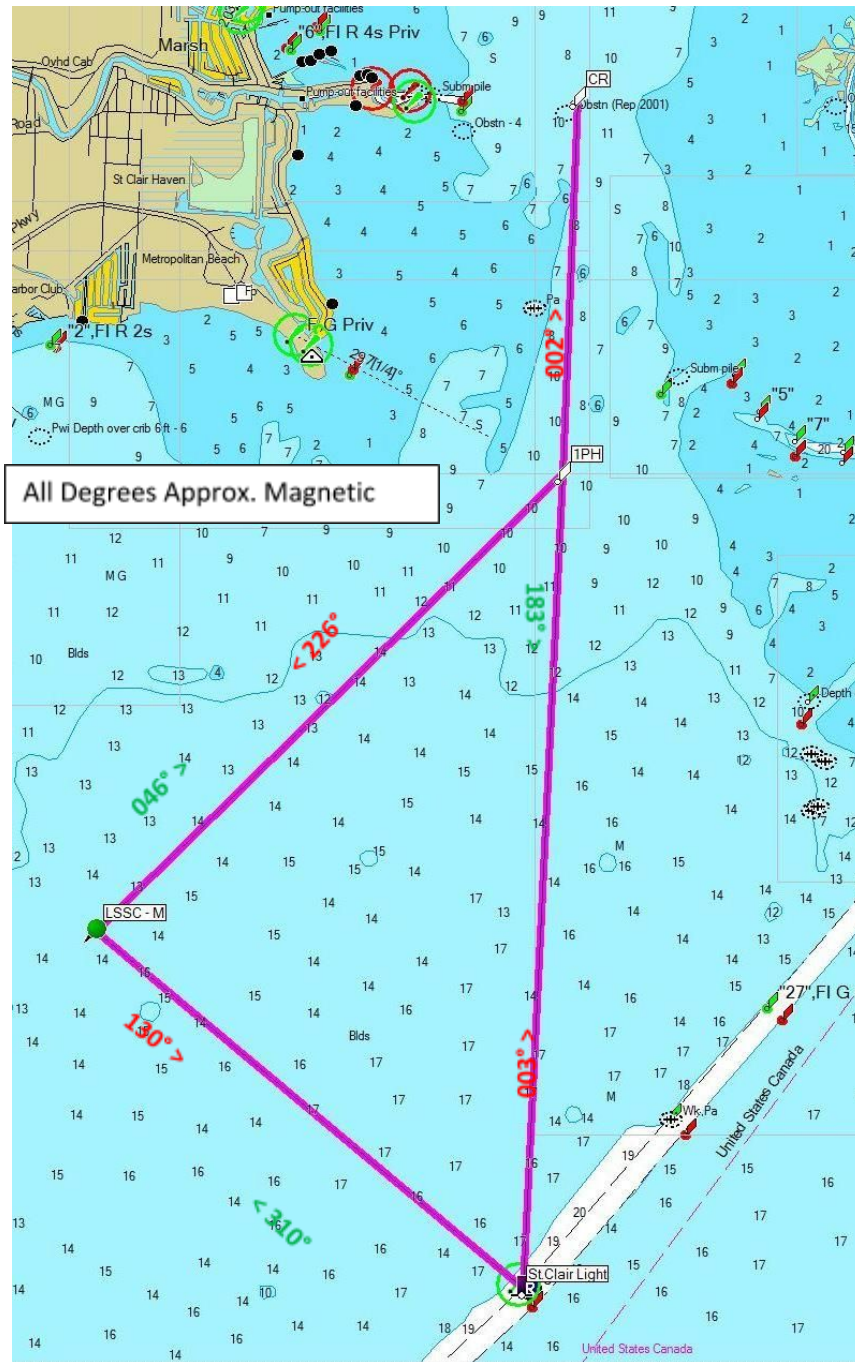
Sailing Instructions

NSSC Doublehanded Championship Regatta

Saturday, September 22, and Sunday, September 23, 2018

26. Race Course Diagrams:

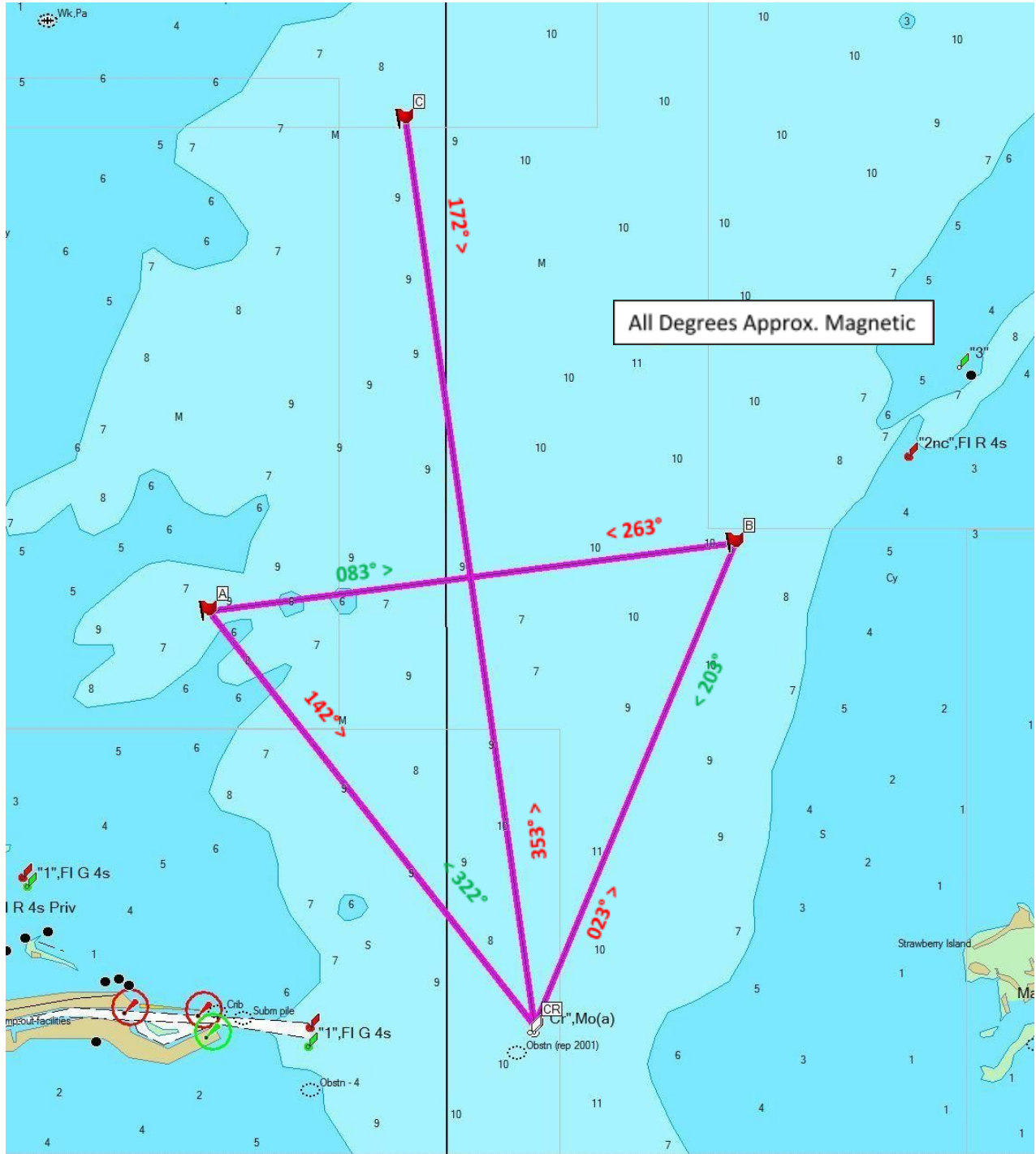
Saturday Race Courses





Sailing Instructions
NSSC Doublehanded Championship Regatta
Saturday, September 22, and Sunday, September 23, 2018

Sunday Race Courses





Sailing Instructions
NSSC Doublehanded Championship Regatta
Saturday, September 22, and Sunday, September 23, 2018

DOUBLEHANDED CLASS RULES
North Star Sail Club

The race rules for doublehanded classes are the same as DRYA (Detroit Regional Yacht Racing Association) Handbook Section 15 Titled "DRYA PHRF Rules and Regulations" located at: <http://drya.org/phrf/handbook/Handbook.pdf> with the following exceptions. They may be modified for any specific race by published notice. The roller furling guideline for all races is DRYA Credit for Roller Furling Genoas rule 15.12. with the noted exceptions.

1. Two and only two persons shall be aboard the yacht during the race.
2. Self-steering devices and autopilots are permitted.
3. Asymmetrical spinnakers (gennakers, cruising spinnakers) shall be considered "spinnakers", permitted subject to the same maximum size restrictions, if any, which otherwise apply to spinnakers.
4. A ketch or yawl may also fly a mizzen.
5. Unless a doublehanded start is specifically designated to be "jib and main" or "JAM", the jib and main restrictions below shall not apply.
6. If a doublehanded start is specifically designated to be "jib and main" or "JAM" the following rules apply:
 - a. Except as provided below, a yacht may sail only with a main and one foresail at a time, except when changing foresails. If a roller furling credit is taken then sail changes must be bareheaded.
 - b. A properly rigged cutter may fly a yankee and staysail at the same time provided that the combined area of the yankee and staysail does not exceed the area of a 155% Genoa.
 - c. Foresails (including yankee and staysail on a cutter) must be flown hanked on or otherwise attached at the luff along its length and may not exceed 155% of the fore triangle, unless the rating reflects the additional area.
 - d. Whisker poles or spinnaker poles, with a length equal to or less than J, are permitted to pole out a foresail.

NORTH STAR SAIL CLUB RACE COMMITTEE - September 18, 2018